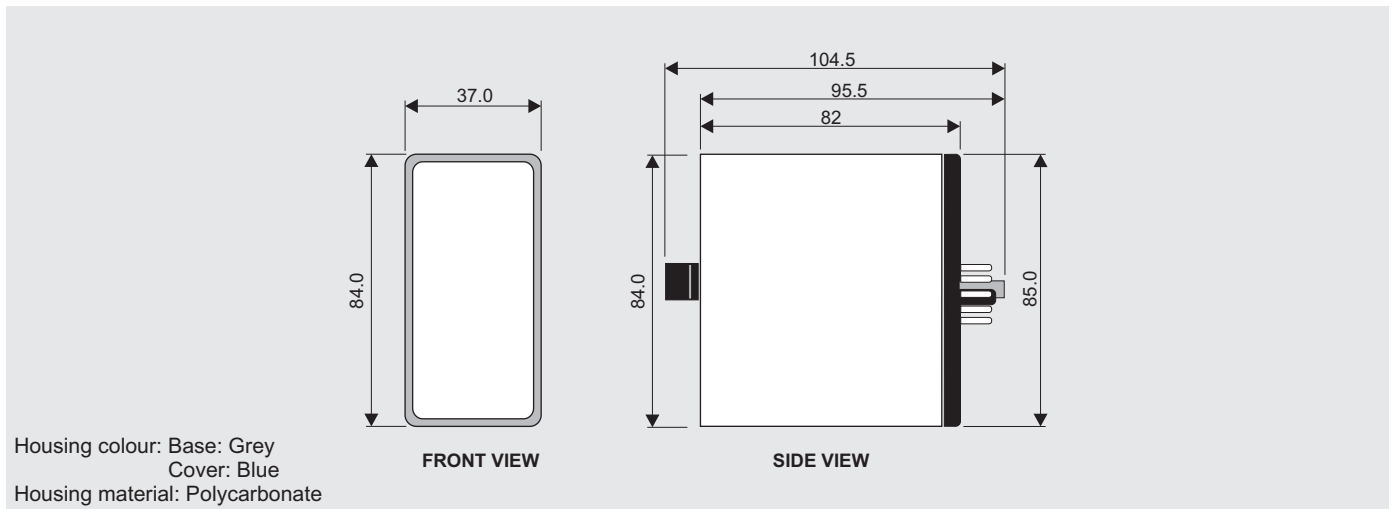


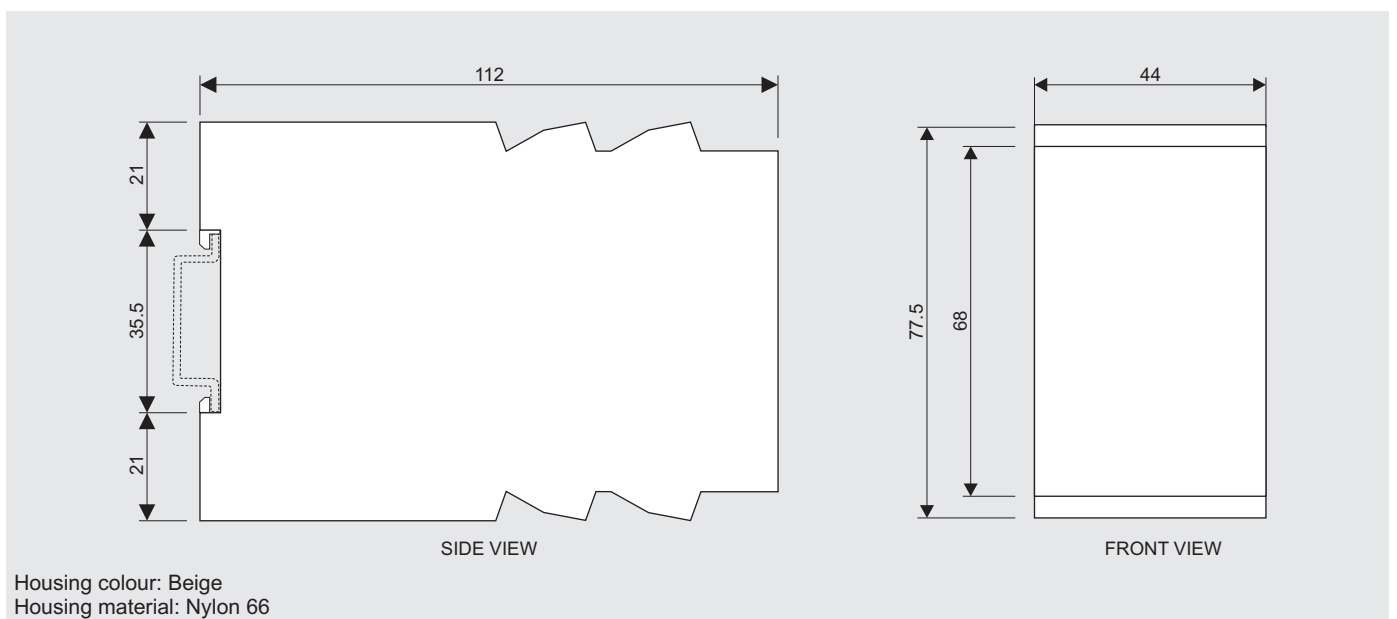
# General

## Housing Dimensional Diagrams

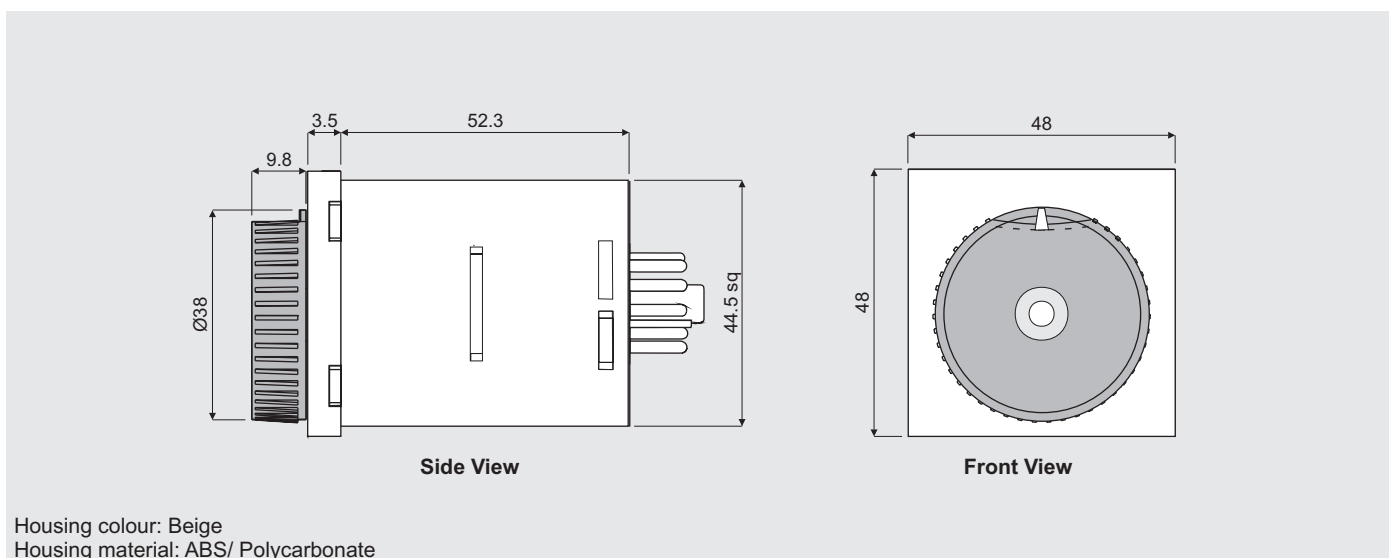
### Slimline



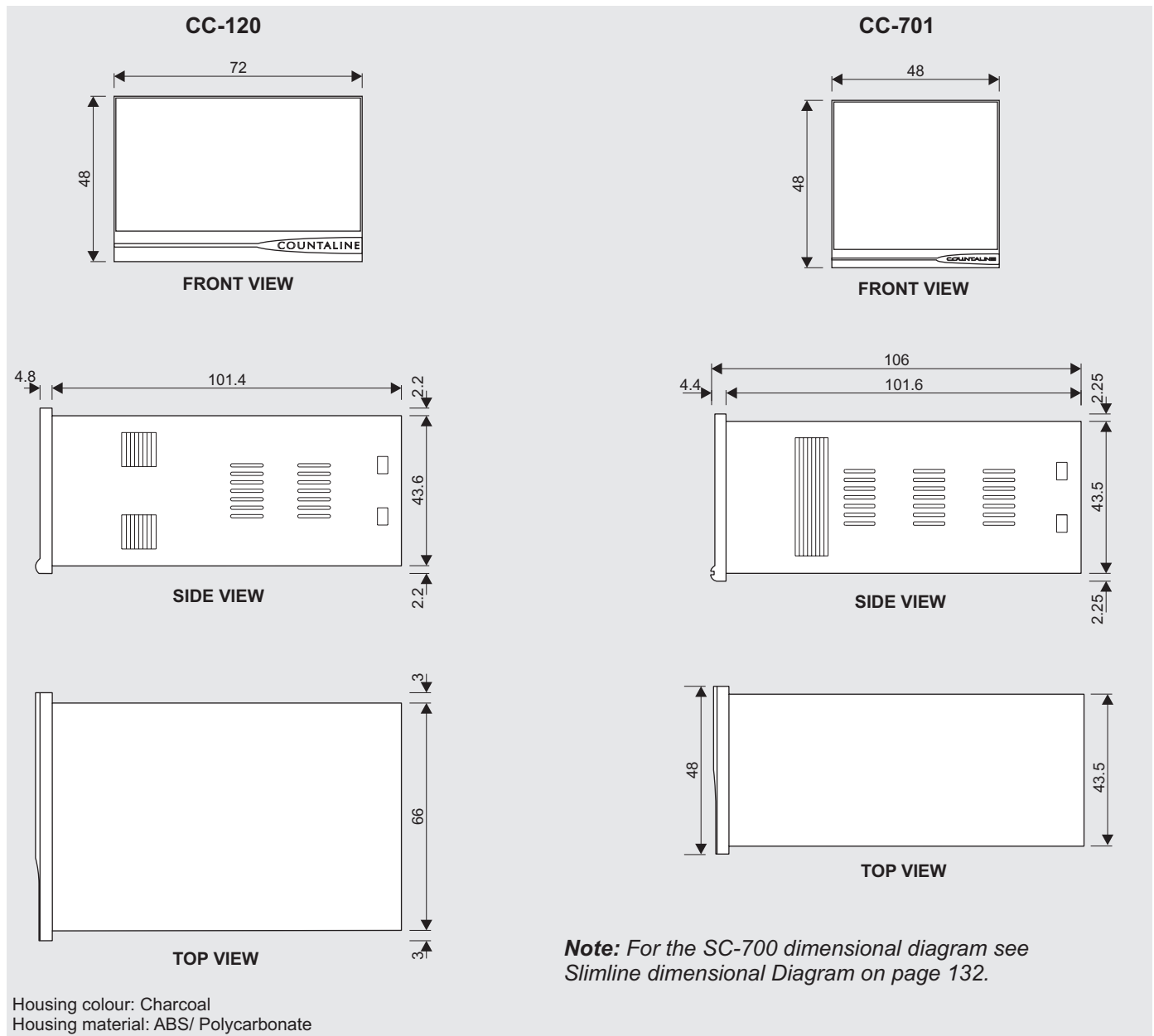
### A-Line & Protecotor



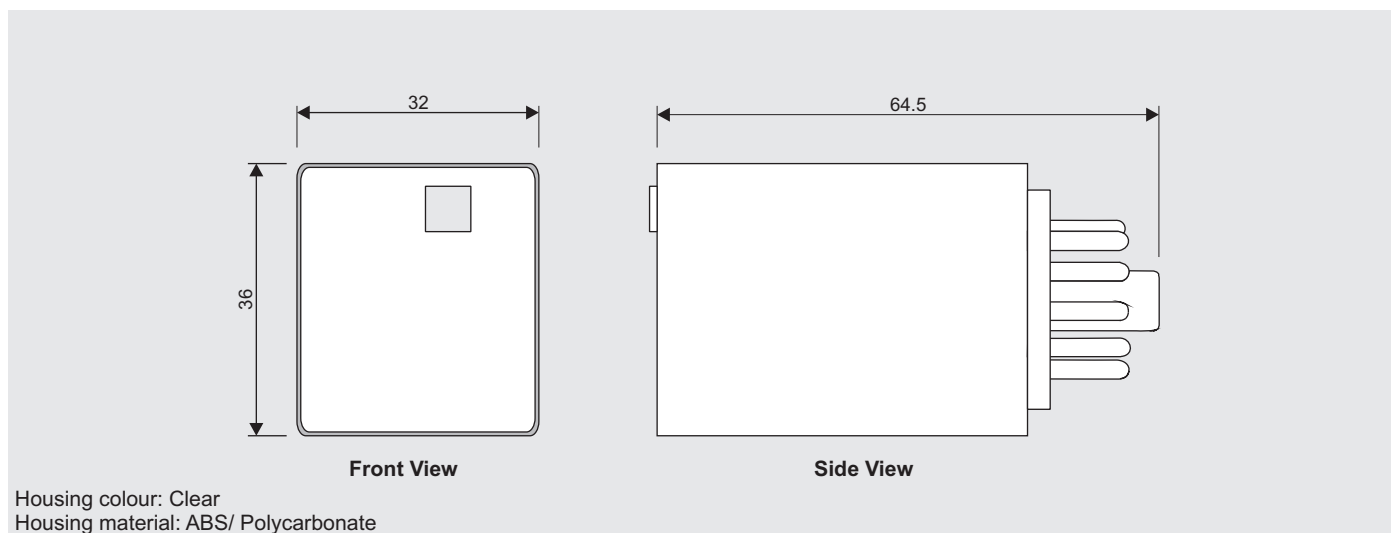
### 48 x 48 Timers



## Countaline



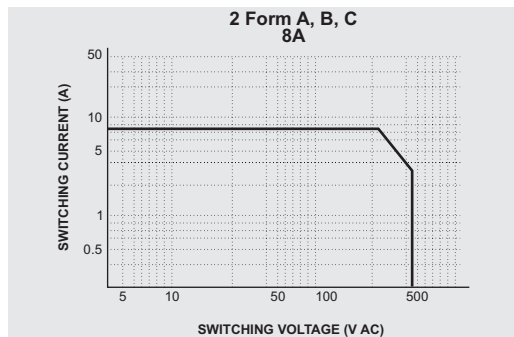
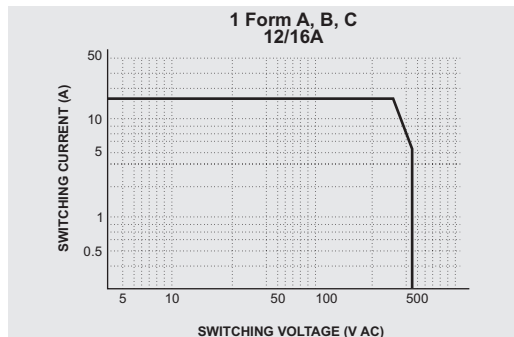
## Industrial Relays



### Technical Information

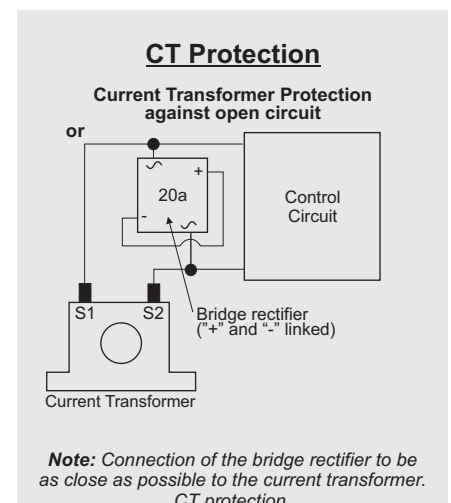
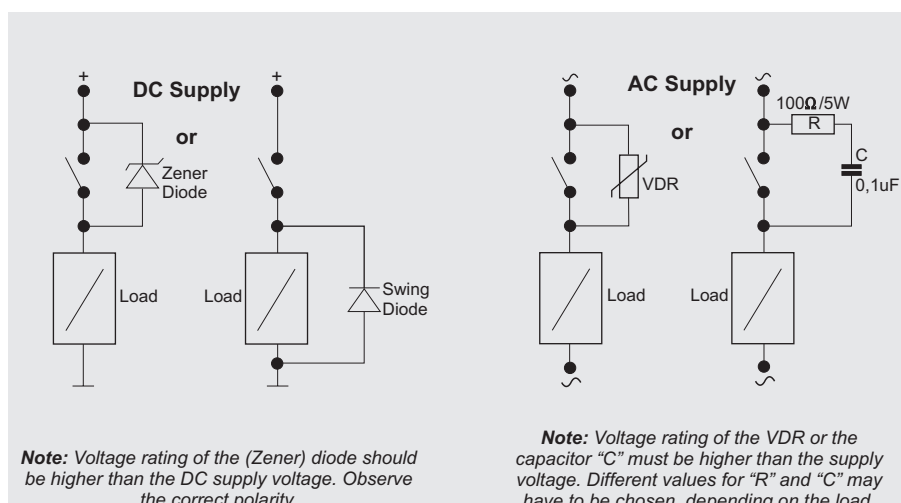
<b>Ambient Temperature:</b>	Storage: -50°C to +85°C Operating: -20°C to +50°C
<b>Maximum ripple on DC power supply:</b>	10%
<b>AC supply frequency:</b>	40 - 70Hz
<b>Protection class:</b>	IP40, IEC144, DIN 40050
<b>Creepage distance:</b>	VDE 0110 (group C 250V), NFC 20040 IEC 158.1
<b>Isolation group:</b>	VDE 0435
<b>Note:</b>	<i>Modules with power supply voltages exceeding 250V do not comply with the above standards.</i>

### Relay Specifications



<b>Contact Rating</b>	<b>SPDT</b>	<b>DPDT</b>
Rated Load:	12A	8A
Max. Switching current:	12A	8A
Max. Switching voltage:	440A AC/125V DC	440A AC/125V DC
Max. Switching Power:	3000VA/4000VA	2000VA
<b>Contact Data</b>		
Material:	AgCdO	
Initial Contact Resistance:	50mΩ max. At 1A, 6V DC	
Service Life	Mechanical:	10 <sup>7</sup> ops
	Electrical:	10 <sup>5</sup> ops
<b>Characteristics</b>		
Insulation Resistance:	1000MΩ, at 500V DC, 50%RH	
Dielectric Strength:	1000Vrms, 1min. Between open contacts 2500Vrms, 1min. Between poles	
Shock Resistance:	10g, 11ms. Functional; 100g, destructive	
Vibration Resistance:	5g/10g, 30 - 150Hz	

### Spark Quenching & CT Protection



## ■ Rated Motor Current Conversion Table

RATED POWER		THREE PHASE SUPPLY 50 - 60Hz					
		220V	380V	415V	440V	500V	660V
kW	Hp	A	A	A	A	A	A
0.37	0.5	1.8	1.03	-	-	1	0.6
0.55	0.75	2.75	1.6	-	-	1.21	0.9
0.75	1	3.5	2	2	1.68	1.5	1.1
1.1	1.5	4.4	2.6	2.5	2.37	2	1.5
1.5	2	6	3.5	3.5	3.06	2.6	2
2.2	3	8.7	5	5	4.42	3.8	2.8
3	4	11.5	6.6	6.5	5.77	5	3.8
4	5.5	14.5	8.5	-	-	6.5	4.9
5.5	7.5	20	11.5	22	10.4	9	6.6
7.5	10	27	15.5	14	13.7	12	8.9
10	13.5	35	20	-	-	15	11.5
11	15	39	22	21	20.1	17	12.7
15	20	52	30	28	26.5	23	17.3
18.5	25	64	37	35	32.8	28.5	21.3
22	30	75	44	40	39	33	25.4
30	40	103	60	55	51.5	45	34.6
37	50	126	72.5	66	64	55	41.8
45	60	147	85	80	76.3	65	49
55	75	182	105	-	-	80	60.6
75	100	239	138	135	125	105	79.8
90	125	295	170	165	156	129	98
110	150	356	205	200	186	156	118
132	175	425	245	230	216	187	141
160	220	520	300	-	-	228	173
200	270	640	370	-	-	281	214
220	300	710	408	385	-	310	235
250	350	823	475	450	-	360	274
315	430	1000	584	-	-	442	337

**Note:** Star-Delta rating calculated at full load current x 0.58